



January 2, 2020

Dear Neighbor,

Happy New Year from our team at Vulcan Materials Company including our 60 employees and retirees living here in Richmond County. My name is Matthew Medlin. I am the plant manager here at Rockingham Quarry. For those who don't know me, I have been with Vulcan for 20 years.

Before working my way up to plant manager, I learned about the many aspects of the business serving in various plant and supervisor roles. The training and support I have received along the way, coupled with a very dedicated team of local employees at Rockingham, help us run an operation that's safe and responsible for everyone.

Since 1969, Rockingham Quarry has produced construction aggregates that help grow and sustain our community while forming the building blocks for the region's roads, bridges, homes, hospitals, schools, office buildings and places of worship.

As we begin the New Year, we'd like to invite you to a Neighbor Information Open House. This will be an opportunity to meet each other and to update you on our plans for 2020. In order to accommodate everyone's schedules, the event will be an open format with staffed information tables. You are welcome to come and leave at anytime during the two-hour event.

Please Join Us
Neighbor Information Open House

Friday, January 10 from 5:30 - 7:30 p.m.
West Rockingham Elementary School
271 W US 74 Hwy, Rockingham, NC 28379

We have also started a website at www.VulcanRockinghamQuarry.com and a Community Line that you can use to get more information and provide feedback.

Rockingham Quarry Website & Community Line

www.VulcanRockinghamQuarry.com
Call: (980) 296-1919 | Email: VulcanRockinghamQuarryCommunity@vmcmail.com

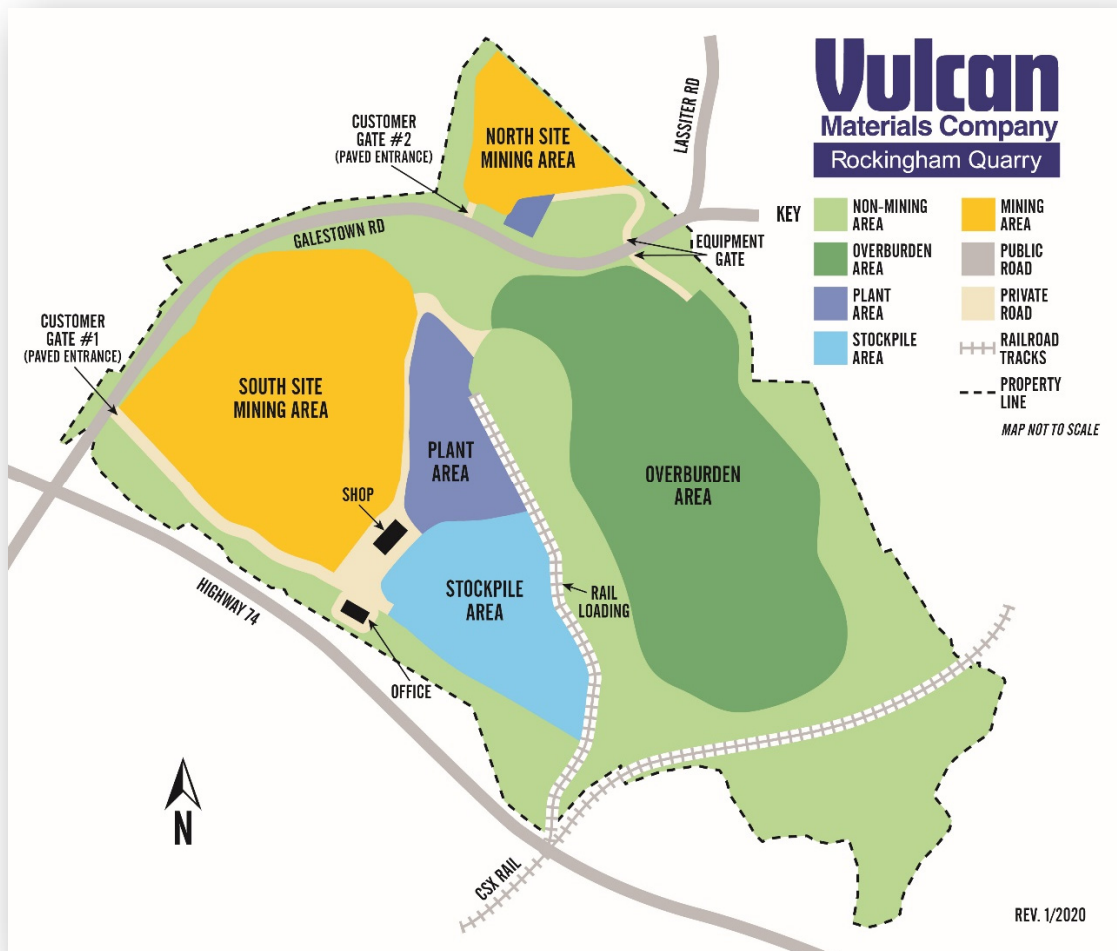
We will keep the website updated and post all of the information from the open house. If you ever have a question or feedback, just email or call us.

So what's new in 2020?

North Site Work Begins

In January 2020, we will begin to activate an area for mining north of Galestown Road to support our existing aggregate production and to primarily serve local customers. This project will help us continue our investment and hiring in Richmond County. The site has been owned by Vulcan since the early 1990s and is fully permitted as part of our state mining permit.

It is comprised of about 68 acres in a triangle-shaped area north of Galestown Road and west of Lassiter Road by the power lines and is labeled “NORTH SITE MINING AREA” on this site plan:

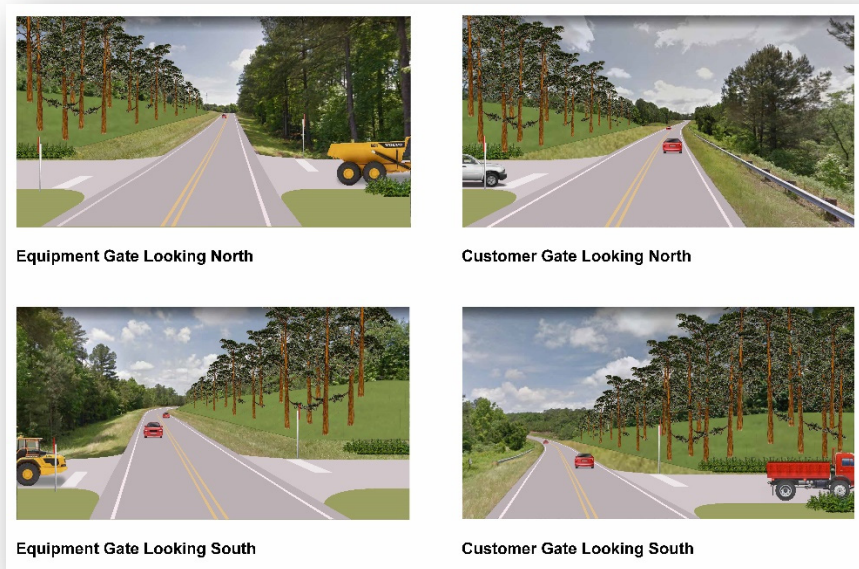


The North Site will be designed and operated to meet or exceed all state and federal requirements and regulations. We will mine granite from the site, process it with portable equipment and load customer trucks. The site will also be screened from Galestown Road by existing vegetation and landscaped berms that will be planted with grasses, longleaf and Virginia Pines to provide visual screening and sound buffering.

How will the North Site be used?

We will mine approximately one-half of the site and process the granite on the North Site to primarily support local construction and building projects. Our existing operations to the south, including the mining pit, production plant, rail loading and customer gate will remain in operation. The North Site will support our local product sales.

The North Site will be buffered and screened from Galestown Road by earthen berms of 16-20 feet in height. Customer trucks and employees will use a paved, gated entrance on the west side of the site. Construction vehicles will use the equipment gate that will enable our equipment to safely cross between the North Site and our property on the south side of Galestown Road.



Rock will be drilled and safely blasted in the mining area. A wheel loader will transport the rock to the portable plant area consisting of a primary and secondary crusher and two screens. An excavator will feed the rock into the portable plant for processing to customer specifications. A wheel loader will stockpile finished product and load customer trucks, which will be weighed and ticketed before exiting. A site-based water truck and plant mounted water sprays will be used for dust control. Mobile equipment operating on the site will utilize low-sound safety back-up alarms to control sound while keeping workers safe.

Operations

We anticipate North Site construction will be completed in Fall 2020 and then expect to begin producing product for sale to customers. Shipping hours via customer trucks will typically run 6 a.m. to 5 p.m., Monday through Friday. Production hours, or mining activity, will generally be 7 a.m. to 5 p.m. Monday through Friday with some equipment maintenance taking place in after hours. In some cases, shipping hours could vary to supply specialty and emergency jobs.

Safe and Controlled Blasting

We will continue to use safe and controlled blasting techniques. We are extending our Rockingham seismic monitoring network to cover the north site and will continue to monitor all blasting through an independent third party. Vulcan will meet or do better than the state safety limits for ground vibration and air blast overpressure which are designed to protect people and structures on and off the quarry property.

A typical blast lasts less than half of a second and will take place on weekdays during daytime hours. We mine material based on market demand. Based on our current projections, we anticipate about 10 – 30 controlled blasts per year on the North Site.

As we have for years, we will continue to hold traffic on Galestown Road to maintain safe a distance during blasting activities. Neighbors can sign up to receive Pre-Blast Notifications by contacting our Community Line.

Construction Plan

We will begin to prepare the site in January 2020. Construction is expected to run January – October 2020.

- Week of January 13 - Site construction expected to begin
- March 16 - Galestown Road construction and detour begins
- May 1 - Galestown Road expected to reopen (contingent on weather)
- Early October 2020 - North Site construction expected to be complete

Vulcan's contractor will adhere to a good neighbor policy to ensure the site is built with respect to the community, our neighbors and the public. Questions, comments and feedback can be directed to the Rockingham Quarry Community Line at (980) 296-1919 or VulcanRockinghamQuarryCommunity@vmcmail.com.

Site preparation will involve installation of stormwater management controls, clearing, grading and stripping. Landscaped berms will be built along Galestown Road and the customer entrance will be paved. In coordination with NCDOT, Vulcan will fund and make improvements to a section of Galestown Road in the area of the equipment gate, which is to the east.

Construction will proceed in the following phases:

- Initial site prep
- Clearing and grading
- Galestown Road improvements
- Construction of 16-20' high screening berms

Construction hours will generally run 7 a.m. - 5 p.m., Monday - Friday, with equipment servicing and maintenance outside of these hours. All construction equipment on the site will utilize low-sound alternative back-up alarms to control sound. The contractor will maintain a dust control plan including a water truck to control dust on the site and roadway. A street sweeper will be used on Galestown Road as necessary.

Galestown Road Improvements

Vulcan will make improvements to Galestown Road to provide access to the site. Work includes construction of guard rails and pavement replacement.

- From approximately March 16 to May 1, 2020 (contingent on weather) Galestown Road will be closed from Dicks Road to Lassiter Road. Traffic will be routed via a NCDOT-approved detour with signs posted. Updates will be posted to our website.
- Vulcan is coordinating the detour with NCDOT, Richmond County, emergency services, law enforcement, schools and the community.

Equipment Gate Crossing

Construction equipment, including off-road haul trucks, will mainly transport overburden material (dirt excavated to reach the top of the rock formation) from the North Site across Galestown Road to the south. Crossing vehicles will also include a water truck and other construction equipment.



Once the Galestown Road improvements are complete, the equipment gate will be utilized during construction with crossings taking place during regular construction hours (7 a.m. - 5 p.m., Monday - Friday). The crossing plan has been coordinated with NCDOT, Richmond County, emergency services, law enforcement and the schools.

All crossing personnel and vehicles will adhere to a NCDOT-reviewed crossing safety plan:

- The equipment gate and entrance were designed and located to ensure a safe line of sight for both Galestown Road drivers and crossing equipment operators.
- Advance warning signs will alert drivers on Galestown Road of the crossing.
- The equipment crossing will be maintained as a two-way stop.
- ALL crossing equipment will come to a complete stop and ensure that it is safe to cross.
- Customer trucks will NOT use the equipment gate.
- The equipment gate will be locked when not in use.

Once the construction phase is complete, the equipment gate will be used on an ongoing basis as the North Site is developed.

Future Development

As far as our future plans, we want to share that within the last year we acquired the property commonly known as "TIAA" or "SOS Timber," which comprises of approximately 218 acres adjacent to the North Site, northeast of the power lines and north of Galestown Road. Unlike the North Site, this property will require the necessary zoning and permitting.

Within the next couple years, we expect to begin a public process to seek the required approvals. This means mining activity could begin a minimum of three to five years from now.

We are committed to working with you and our neighbors to design plans that are mutually responsive to the community, our operations and Richmond County. We understand you will have questions and feedback for us. We are committed to working with you. We will provide more details in the future and will seek your input throughout the process.

2020 Quarry Open House & Tours

Later this year we will host an Open House at Rockingham Quarry, including facility tours, displays, exhibits and activities for kids. We're working on setting a date and will let you know.

In closing, I want to reiterate that our entire team is committed to growing our investment in Richmond County and operating in a safe, socially and environmentally responsible manner that will create and support jobs and economic opportunity.

We look forward to seeing you on January 10 at the Neighbor Information Open House. In the meantime, please visit us at www.VulcanRockinghamQuarry.com or contact our Community Line at (980) 296-1919 or VulcanRockinghamQuarryCommunity@vmcmail.com.

Thank you for your time.

Sincerely,



Matthew Medlin

Plant Manager

Vulcan Materials Company - Rockingham Quarry